

Medical Suite Business Solution

Highlight

- Save resources and reduce manual data entry and errors
- Manage cash flow and profitability better with timely sales information and management reports
- Easily manage and strategize sales to maximize earnings.
- Increase customer's loyalty with Customer Retention Program

Business Overview

Medical Suite is designed specially for clinic or wellness centre companies to manage the day to day operation, while having full control on patients historical records and transactions.

From the day to day common business workflow from receiving patient's appointment, to perform closing and provide a comprehensive management reporting, Medical Suite delivers a prompt and robust management tool.

Driving Revenue Higher

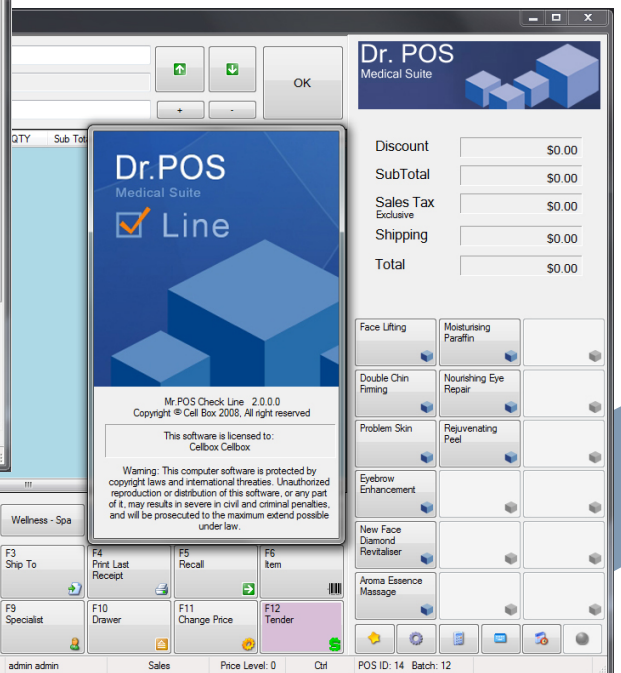
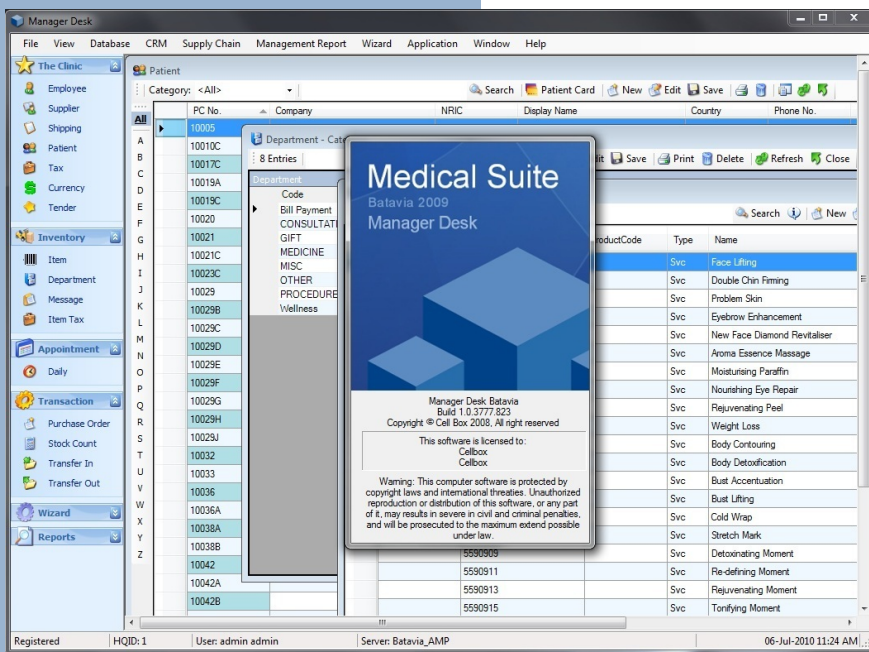
Medical Suite provides a management control on promoting better patient service. Having a prompt and efficient tool to collect information, you are able to create and maintain a good relationship with your patient.

Key Features

- Clinical operations
- Patient card system (Electronic Medical Record)
- Medicine control and tracking
- Purchase order and product receiving operation
- Pricing, sales, and promotions
- Patient relationship management and marketing
- Transaction security
- Wizard for inventory management
- Corporate Billing
- Employee and Time Clock
- Itemized billing management
- 50+ Management reporting module

Technology

Built on Microsoft® .NET platform, Medical Suite is robust and easy to manage. The work interface is designed to be intuitive to all users, giving it a rapid learning curve.



Manager
D E S K

Application

- Medical Center
- Wellness centre
- Beauty Salon and Spa



“It is almost a miracle. Cell Box put years of paper information in our wonderful new online system. Now all it takes is a mouse click.”

Victor Tang

Vice President, Aesthetic Medical Partners

Add-On Modules

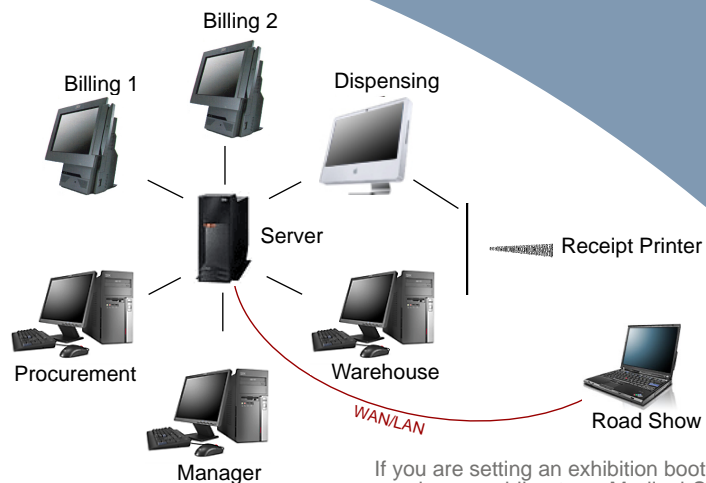
- Scheduler
CellBox Scheduler will assist you to plan and manage your customer's appointment or reservation for your services.
- Dealer Manager
An invoicing system for corporate and dealer's account with payment tracking.
- Web E-commerce
Providing you the tools to expand your store space to the world wide web and simply manage the operation with Medical Suite Manager Desk.
- Headquarter
A centralized reporting system that compiles your branches' sales report and inventory status.

Contact Information

® Intel and Pentium are registered trademarks of Intel Corporation in the United States, other countries, or both.

® Microsoft and Windows are registered trademarks of Microsoft Corporation in the United States, other countries, or both.

For more information
To learn more about Mr.POS and other add-on business solutions from CellBox, please contact our sales agent, or visit www.cellbox.net



If you are setting an exhibition booth or running a mobile store, Medical Suite can be deployed in a mobile mode.

Configuration

Medical Suite can function as front end and back end station of the business operation. Or in a configuration where you need to connect multiple outlets with multiple entry point to share inventory information and consolidate sales reporting to the headquarter.

System Requirements

- A PC with Intel® Core 2 Duo or higher processor or Macintosh with Intel Processor
- A minimum of 2GB of RAM
- Approximately 50MB of available hard disk space for the basic application and files (hard-disk usage will vary depending on configuration and location of database files)
- A CD-ROM drive
- VGA (1024x768) or higher-resolution monitor with 256 colors for Check Line and Manager Desk application
- A pointing device
- A receipt printer

Operating System Requirements

- Microsoft® XP Home or Professional with SP3 or later or Microsoft® Windows Vista Business or Microsoft® Windows 7 Premium
- Windows® Server 2003 or Windows® Small Business Server 2003

Database Requirements

- Microsoft® SQL Server 2005 or later
- Microsoft® SQL Express 2005



CELL BOX

© Copyright Cell Box Pte Ltd 2010
All Rights Reserved